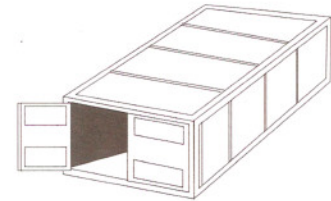




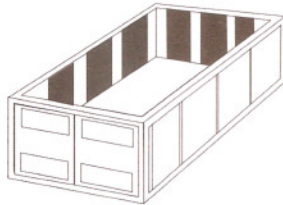
DRAGON EXPRESS

CONTAINER SPECIFICATIONS

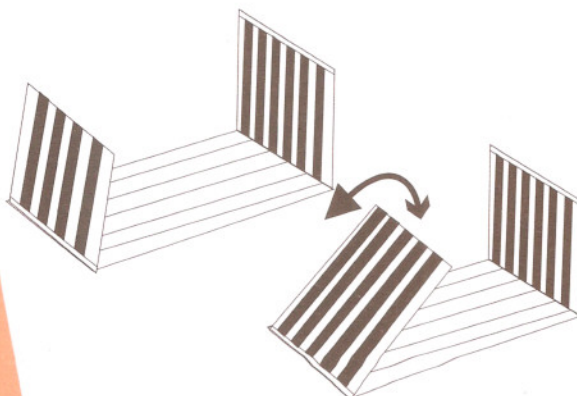
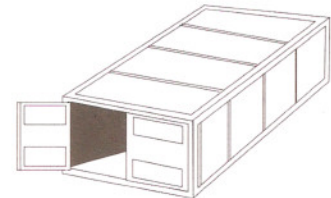
Interior Dimension	Door Opening	Tare Weight	Cubic Capacity	Payload
20' STANDARD				
L:5.919m 19'5"	W:2.286m 7'6"	1,900kg.	33.0 cbm.	22,100kg
W:2.340m 7'8"	H:2.278m 7'5"	4,189 lbs	1,165 cu.ft.	48,721 lbs
H:2.380m 7'9 1/2"				
40' STANDARD				
L:12.051m 39'6 1/2"	W:2.286m 7'6"	3,084 kg	67.3 cbm	27,397 kg
W:2.340m 7'8"	H:2.278m 7'5"	6,799 lbs	2,377 cu.ft.	60,401 lbs
H:2.380m 7'9 1/2"				
40' HIGH CUBE CONTAINER				
L:12.056m 39'6 1/2"	W:2.340m 7'8"	2,900kg	76.0cbm.	29,600kg
W:2.347m 7'8" 1/4"	H:2.585m 8'5"3/4"	6,393 lbs	2,684cu.ft.	65,256lbs
H:2.684m 8'9 1/2"				



Interior Dimension	Door Opening	Top Opening	Tare Weight	Cubic Capacity	Payload
20' OPEN TOP CONTAINER					
L:5.919m 19'5"	W:2.286m 7'6"	L:5.425m 17'9 1/2"	2,174 kg	31.6 cbm.	21,826kg
W:2.340m 7'8"	H:2.581m 7'4 1/2"	W:2.222m 7'3 1/2"	4,793 lbs	1,116 cu.ft.	48,117 lbs
H:2.380m 7'9 1/2"					
40' OPEN TOP CONTAINER					
L:12.043m 39'6"	W:2.279m 7'5 1/2"	L:11.585m 38'	4,300 kg	34.0 cbm	26,181 kg
W:2.338m 7'8"	H:2.272m 7'5 1/4"	W:2.162m 7'1"	9,480 lbs	2,260 cu.ft.	57,270 lbs
H:2.272m 7'5 1/4"					



Interior Dimension	Door Opening	Tare Weight	Cubic Capacity	Payload
40' HIGH CUBE REEFER CONTAINER				
L:11.557 37'11"	W:2.286m 7'6"	4,320 kg	65.8 cbm.	28,180kg
W:2.286m 7'6"	H:2.454m 8'1/2"	9,524 lbs	2,324 cu.ft.	62,126 lbs
H:2.491m 8'2"				
40' REEFER CONTAINER				
L:11.207m 36'9"	W:2.216m 7'3"	4,600 kg	54.9 cbm	25,881 kg
W:2.246m 7'4"	H:2.183m 7'2"	10,141 lbs	1,940 cu.ft.	57,059 lbs
H:2.183m 7'2"				



Interior Dimension	Tare Weight	Payload
20' FLAT RACK		
L:5.702m 18'8 1/2"	2,330 kg	21,670kg
W:2.438m 8'	5,137 lbs	47,773 lbs
H:2.327m 7'7 1/2"		
40' FLAT RACK		
L:11.820m 38'9 1/4"	5,260 kg	25,220 kg
W:2.148m 7'1/2"	11,596 lbs	55,600 lbs
H:2.095m 6'10 1/2"		
40' COLLAPSIBLE FLAT RACK		
L:12.080m 39'7 1/2"	5,800 kg	29,200 kg
W:2.126m 6'11 1/2"	12,787 lbs	64,374 lbs
H:2.043m 6'8 1/4"		